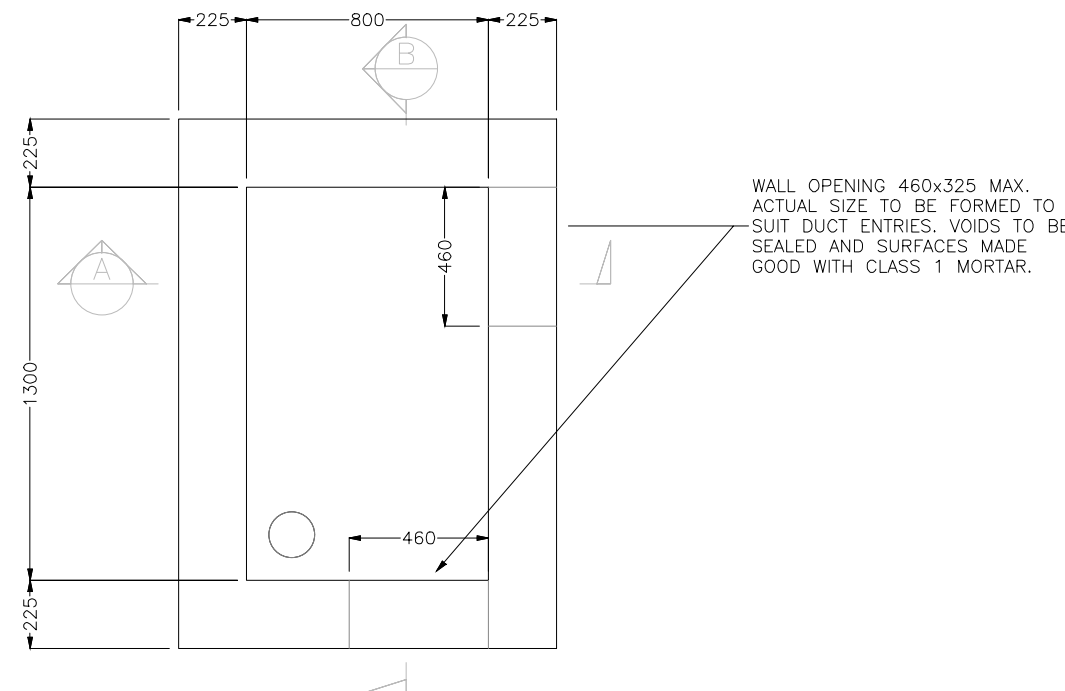
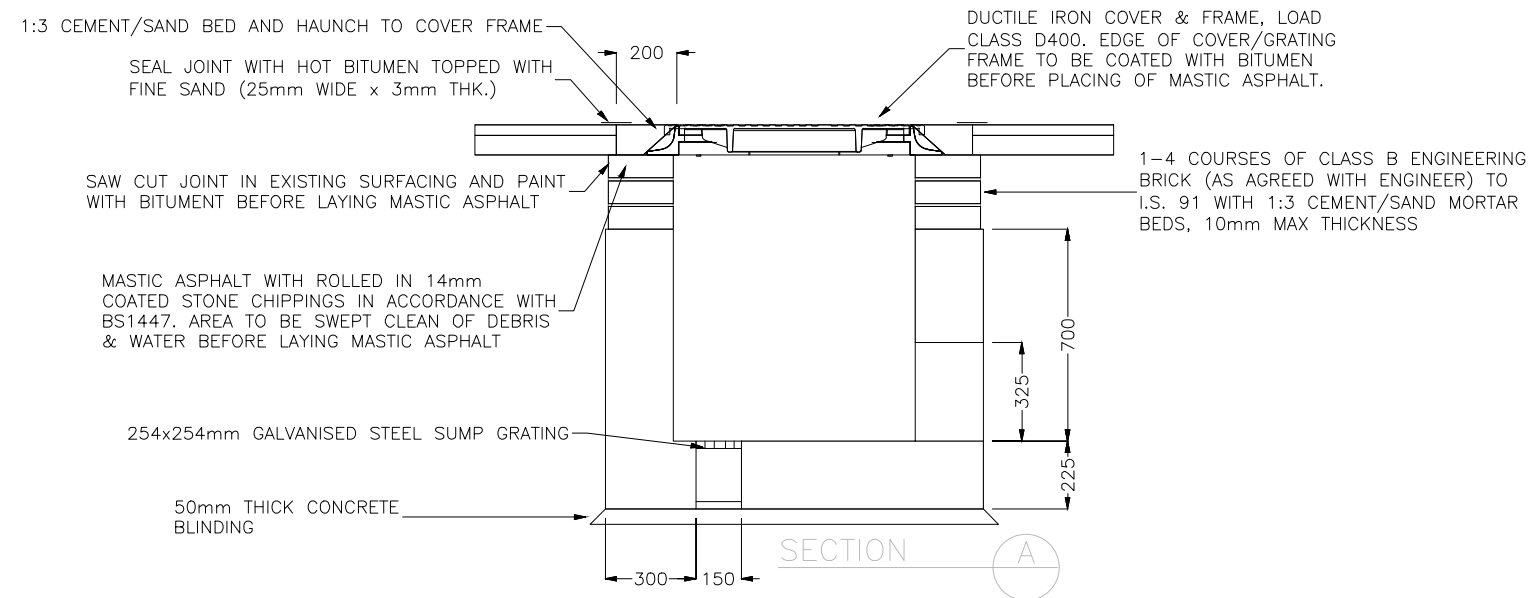


**NOTES:**

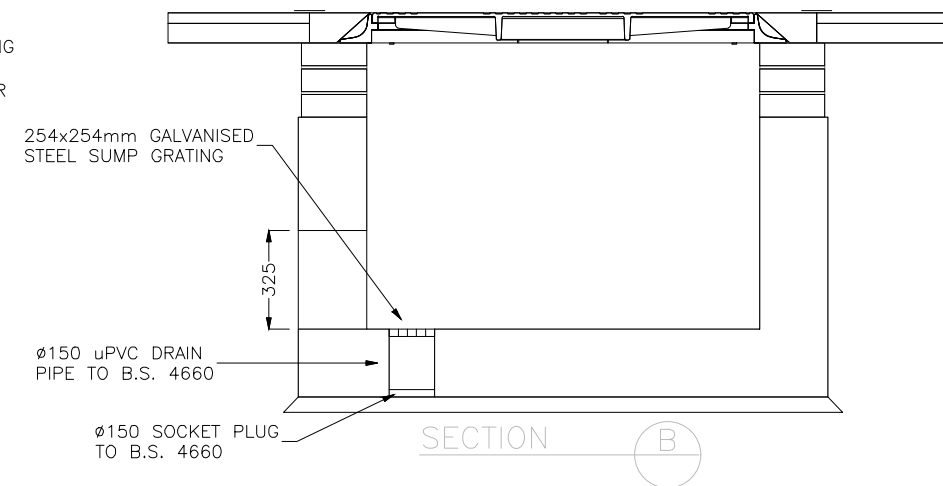
1. This design is subject to EirGrid approval and should be used for planning purposes only.
2. This drawing is to be read in conjunction with relevant drawings, specifications and reports.
3. Dimensions are in millimeters, unless noted otherwise.
4. Drawings are not to be scaled use figured dimensions only.
5. All material and workmanship to be in accordance with the NRA./TII specification for Roadworks, May 2005 and subsequent revisions.
6. Reinforced concrete to be a minimum grade C32/40, Sulphate resisting cement to be used where aggressive soil conditions apply.
7. Carriageway covers and frames to be to B.S. 124.
8. All covers to have ESB logo incorporated in them to the approval of EirGrid.
9. Brickwork to be class B Engineering, beds and Joints to be class 1 mortar.
12. Link box chambers to be obtained from ESB approved suppliers only.
13. Final position of Link Box to be agreed with EirGrid prior to installation.



**Link Box Chamber Detail - Plan**  
SCALE 1:20



**Link Box Chamber Detail - Section A-A**  
SCALE 1:20



**Link Box Chamber Detail - Section B-B**  
SCALE 1:20



Head Office  
Beenreigh,  
Abbeydorney,  
Tralee, Co. Kerry  
Ireland  
Tel: 00353 66 7135710

CLIENT



PROJECT

Coumragappul Wind Farm  
110kV Grid Connection

PROJECT NUMBER  
05-828

SHEET NUMBER  
05828-DR-164

SHEET TITLE

Typical Link Box  
Chamber Details

DRAWING STATUS  
For Planning

ISSUE/REVISION

I/R	DATE	DESCRIPTION
P1	13.01.2023	Issued For Planning